

ANNUAL REPORT 2013

Bone Marrow Donor Registry
and Cancer Support Services





COVER PHOTO

Sharel, 4 years old. Playing and therapies at Ezer Mizion keep her spirits up as she battles with leukemia.



US Tax ID 13-3660421

UK Reg. Char. 1073496

France 4914 67536 00018 853C

Israel AR 580079978

Canada 85064 7637 RR0001

www.ezermizion.org

TABLE OF CONTENTS

Overview and Directors' Message	1
The Cancer Epidemic	8
Our Mission.....	9
Under Construction	11
Strategic Priorities	14
Continued Growth	16
Ezer Mizion and the IDF	22
Your Involvement	25
Personalized Donor Pool	26
Cancer Support Services	34
Financials	38
Directory.....	40

Overview

Every year, thousands of patients all over the world are diagnosed with life-threatening cancer or other diseases for which a stem cell transplant from an unrelated donor is their best or only hope of a cure.

About 70 percent of patients in need of a transplant do not have a matching donor in their family. They depend on bone marrow registries such as Ezer Mizion to match them with an unrelated donor and facilitate a transplant.

These patients' transplant teams will seek a donor in Bone Marrow Donors Worldwide (BMDW), where there are over 22 million unrelated donors listed in Registries around the world.

As an underrepresented minority, Jewish patients have very slim chances of finding a match in international registries. That is why Ezer Mizion established its registry. Even though we will serve any and every patient that comes our way, our primary focus is to provide for the needs of Jewish patients everywhere.

With the top international accreditation standards of WMDA (World Marrow Donor Association) and affiliation with NMDP (National Marrow Donor Pool), Ezer Mizion is known as a leader in the field. Today Ezer Mizion collaborates with transplant centers in close to 50 countries. At the end of 2013 we matched over 6,300 patients with stem cell donors and facilitated over 1,400 lifesaving transplants.



"I just want to get better and go back to kindergarten to play with my friends"

- Five year old Yonatan



"Ever since our little Shlomo was diagnosed with cancer, we have been hanging on tight. Ezer Mizion has been our lifeline in these trying times."

- Naftali, Shlomo's father

DIRECTORS' MESSAGE

Taking stock of the year is always accompanied with different perspectives and emotions. For both of us, 2013 was a year that was different than any that we ever experienced before. It was a challenging year in ways that we never anticipated or dreamed of.

From the position of active, normative people who are constantly on the scene supporting people who face serious health challenges, we both crossed from the giving side that we are always busy with. We suddenly found ourselves on the receiving end. For both of us, our lives took a sudden unexpected turn as our spouses were diagnosed with cancer.

We know what it looks like and we are familiar with the feeling, reactions and emotional processes. We know all about medical teams, therapy agendas and prognoses. We were equipped with information and knowledge and a familiarity with these circumstances. That was undeniably helpful. But actually being there as a cancer patient caregiver and spouse is incredibly and indescribably difficult.



Rabbi Dr. (Hon.) Chananya Chollak
International Chairman

Chananya: "We were all optimistic and hopeful despite Leah's terrible prognosis. Her doctors used the best treatment options available. Stem cell transplantation was not considered since it is not used as a cure for her kind of cancer. The treatments were excruciating but the drive to live carried us on with hope for better times.

"Leah fought valiantly. We did everything humanly possible and prayed fervently. We were deeply saddened when the cancer prevailed and she tragically left us in October. Our pain and longing is very great. My children and I, everyone at Ezer Mizion and the entire community all miss Leah terribly."

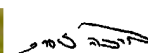
Bracha: "As soon as Motti got his diagnosis and the doctor's assessed his treatment protocol, we knew he would need a stem cell transplant to survive. It hit us like a ton of bricks. I suddenly felt how fragile life really is.

"I also sensed a deep irony that everything that I had dedicated myself to for the past seventeen years to help other people was now becoming

my anchor and the source of hope for my dear husband's survival. How amazing it was when we found the one single match for him in Ezer Mizion's registry that I have been tirelessly toiling to develop all these years.

"With Motti's gradual miraculous recovery following his stem cell transplant I feel that I have received a profound message. The message for me is that whatever it is that a person does in this world, he is ultimately the greater beneficiary. No one can ever project when or how, but life always comes full circle."

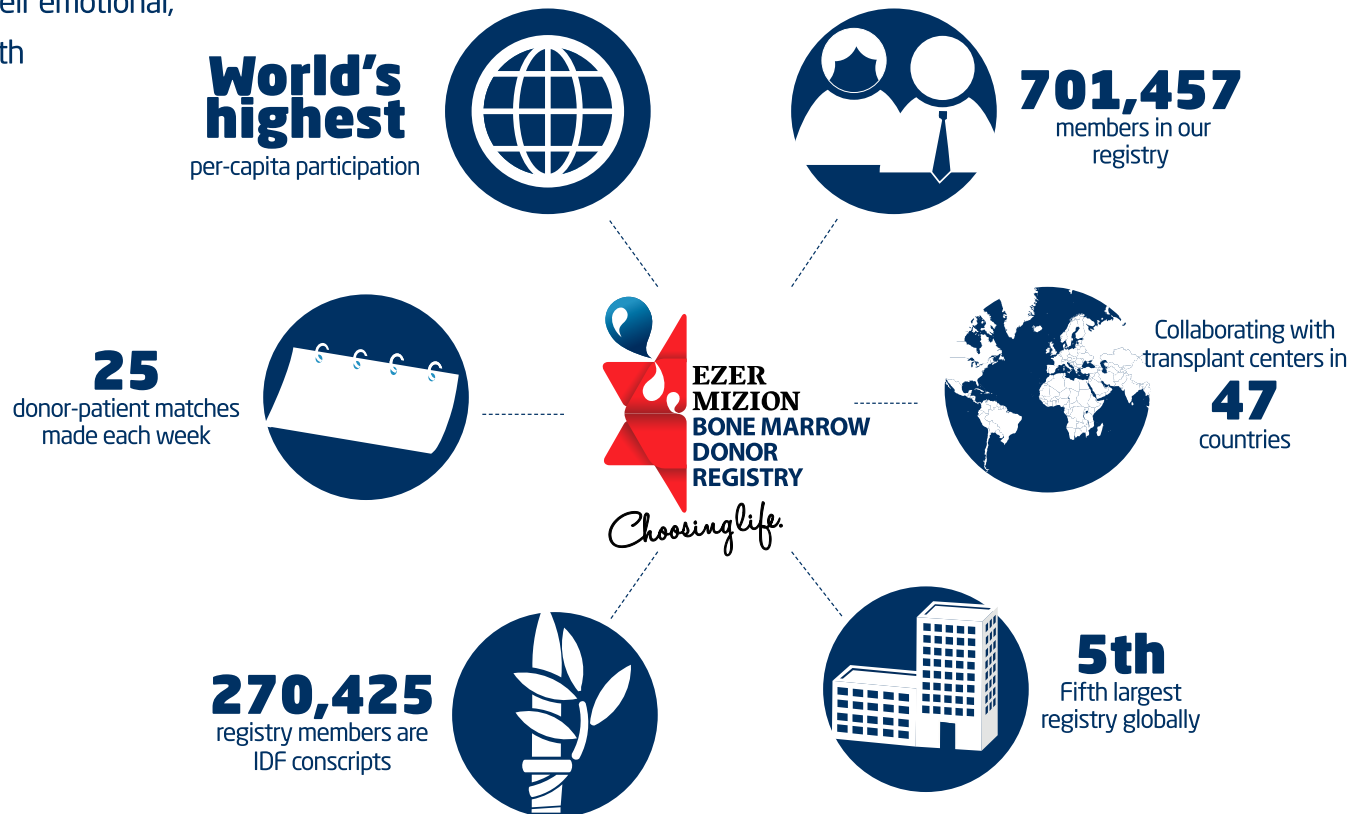
Our similar and at the same time very different experiences in the course of 2013 have eloquently and powerfully deepened our commitment to helping the many people who turn to us in their time of need. We have endured much uncertainty, pain and turbulence in the past year. We choose to use it as a learning experience to become more dedicated and upgrade our registry, its lifesaving services and the support we provide for patients and their families in their struggle with cancer and serious illness.



Dr. Bracha Zisser
Director, Bone Marrow Registry and
Oranit Cancer Support Services

With your support Ezer Mizion can reach its goals

- To grow the registry by adding new potential stem cell donors
- To enrich the registry with broader representation of ethnic minorities
- To facilitate more transplants and to save more lives
- To continue leading by abiding with international standards
- Research Projects
- To assist cancer patients and their families with their emotional, functional and financial needs as they struggle with life threatening illness



Fighting A War on Two Fronts and Winning

The extended Katz family: second from left: Zelda Katz and her grandson Ilai (front row) both had cancer at the same time. Both had stem cell transplants from donors in Ezer Mizion's registry. Shown here at Zelda's first meeting with Nadav, her lifesaving donor (third from left). Also shown far right is Nofer, Ilai's donor and Miki, his mother who said: "Without Ezer Mizion's help all through this saga, we would never have made it!"



THE CANCER “EPIDEMIC”

More Cancer Patients

All over the world the incidence of cancer has risen. The American Cancer Association predicts that by 2030 the global cancer burden is expected to double to epidemic proportions... That means a lot more people who will need cancer support services.

Stem Cell Transplants as a Cure

In recent years, cancer has become the number one cause of death around the world. Bone marrow transplants are increasingly being used as a cure for cancer and for about one hundred other illnesses!

Ezer Mizion's Challenges

- A marked increase in the number of cancer patients and their families in need of support services
- A significant rise in search requests for matching stem cell donors
- Growth in volume demands upgrade of service facilities and staff



Our Mission: Choosing Life

When everything is collapsing, it's good to know that Ezer Mizion is there to help. From diagnosis to donor, from treatment to recovery. Generous supporters like you make Ezer Mizion's lifesaving work possible. Join us! Help us intensify our efforts and provide cancer patients with the resources they need to survive, get better and thrive.

◀ Michal and her three children at their first meeting with the stem cell donor who saved her life. The welcome poster they are holding says: "Thank you for saving our mother".

CHOOSING LIFE COMPELS US TO

Abide by international standards

- Deeper level tissue-typing
- Speed up the transplant process
- Increase chances of success
- Engage in scientific research on transplant issues

Expand the Registry

- Raise public awareness about stem cell transplants
- Rally additional potential donors
- Expand representation of different ethnic groups

Broaden cancer patient support services

- Empower patients and their families
- Embrace a holistic care approach
- Ensure that we reach everyone who needs us



UNDER CONSTRUCTION

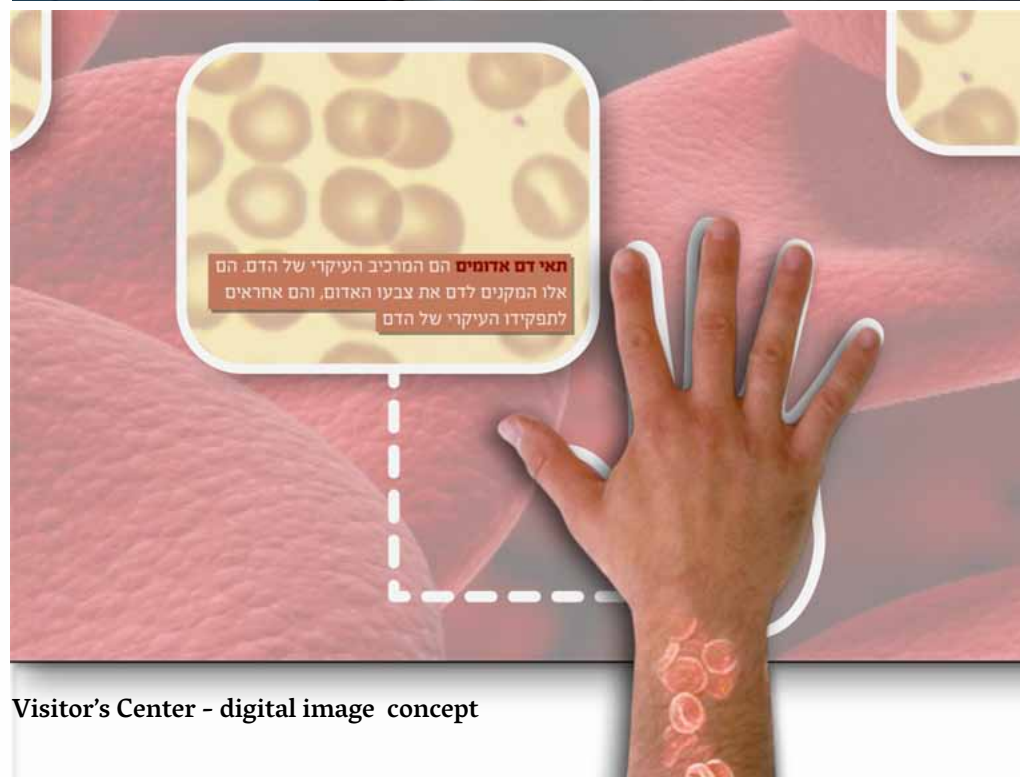
New Bone Marrow Donor Registry Center

On a parcel of land allocated by the Petach Tikvah municipality and adjacent to the existing Ezer Mizion Oranit cancer patient guest home, a five story building that will serve as the new location for Ezer Mizion's Bone Marrow Donor Registry, is currently under construction.

The new building will also feature a residential floor for post transplant patients and an educational visitors center.

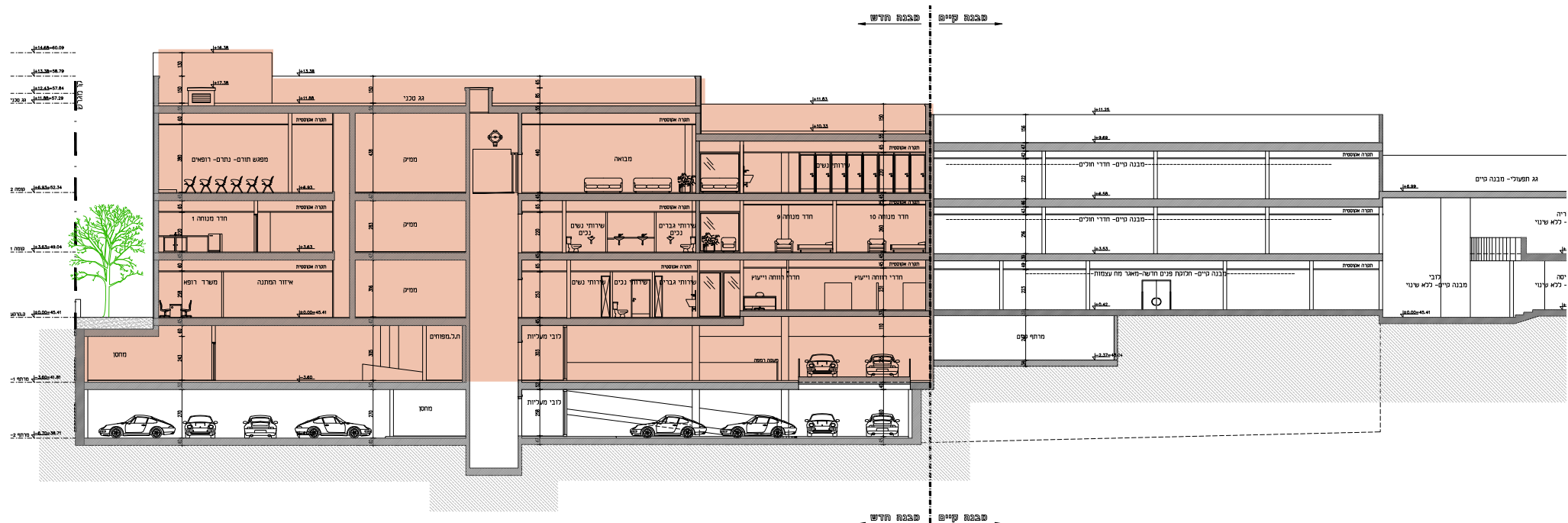
Dedication opportunities are available. For further information on taking a share in this major, unique project contact: rdd@ezermizion.org

◀ Two year old cancer patient Adar at Ezer Mizion's summer camp that she enjoyed together with her parents and siblings.



Visitor's Center - digital image concept

A RESPONSE FOR PRESENT AND FUTURE NEEDS



Location: 40 Kaplan Street, Petach Tikvah

Total area: 4,204 sq. meters

Number of floors: 4 floors

Architect: Avner Yashar

Project Manager: Itsik Ashkenazi, Civil Engineer

Construction completion: 2015

Note: The second underground floor shown in the floorplan above relates to the existing Oranit building and will serve its staff and guests. Only the shaded areas are part of this construction project.

Floor 1: Bone Marrow Donor Registry

This floor will house the Bone Marrow Registry brain center and activities. It is here that search requests will be processed, donor-patient matches will be made and life saving stem cell transplants coordinated. These facilities will foster enhanced Registry function and upgraded services for today and for the future.



Floor 2: Residential Wing

Guest suites for patients and their companions in pre and post transplant stages, when they emerge from isolation and from the hospital for the period of convalescence that requires close access to the hospital. The patients and their companions will be hosted in the guest suites and receive all the support and guidance they need on their way to recovery.



Floor 3: Visitors Center

The Visitors Center will host individuals and groups from Israel and from all over the world. Guests will enjoy an interactive educational experience that will tell the story of the Jewish genome. The Center will focus on imparting a message of shared obligation and inspiring visitors with a commitment to their communities and Jews the world over. Focusing on the roots of the Jewish Nation and following the route of our people throughout the years in all parts of the world, the center will spotlight the bond that exists between Jews, our genetic makeup, the DNA that ties us all together and what it means for each of us.



STRATEGIC PRIORITIES

Serving All Communities

As genetic stem cell matching is based on ethnicity, a representation of all ethnic groups in the registry is vital. Ezer Mizion focuses on raising public awareness on the importance and relative ease of donating bone marrow and dispelling superstitions prevalent among certain ethnic groups that have led to a serious shortage of potential donors for patients in these groups.

Ezer Mizion is committed to increasing access to stem cell transplants and improving outcomes for all patients in need!



Research: HLA Haplotype Frequency and Registry Models Analysis

In order to better plan successful recruitment of volunteer unrelated donors and expansion of the Ezer Mizion registry, an exciting collaboration with the Bioinformatics Research Group of NMDP was initiated.

The main purpose of this research engagement is to obtain geographically and ethnically stratified HLA genotype data, and facilitates analysis of the frequency as well as prospective registry and regional diversity of HLA haplotypes in the Israeli population.

Estimating haplotype frequencies within the population is critical to effective and thoughtful planning for development of donor registries. This data can inform prospective planning and determine recruitment goals within and across ethnic groups of the registry, in order to better serve the patients in need for HCT.

We plan to develop a model based on a range of registry size, composition and expected availability patterns, and generate match rate estimates by ethnic groups. This information will be useful to design strategies for recruitment and determining the "optimal" size of the registry inventory.

◀ **New members joining the registry with simple cheek swabs at a stem cell donor recruitment drive**



Continued Growth

Following is data that measures and reports on our registry's past achievements which we are expecting to further accelerate in our new facility.

In response to the marked increase in illnesses that need stem cell transplant as a cure and to the growth in the number of search requests for matching stem cell donors that we handle each year, we are continuing to expand our registry and broaden our support services for cancer patients.

With the construction of our new Bone Marrow Registry Center building we look forward to accommodating current and future needs, ensure increased efficiency, improve effectiveness and operate at the highest professional level.

- Five year old Simmie with her devoted Ezer Mizion volunteer who keeps her smiling.



Fig. 1: Active Donors and Registry Growth

This figure shows the growth of our Registry in the number of potential donors in the registry.
51,995 new potential members joined the registry in 2013.

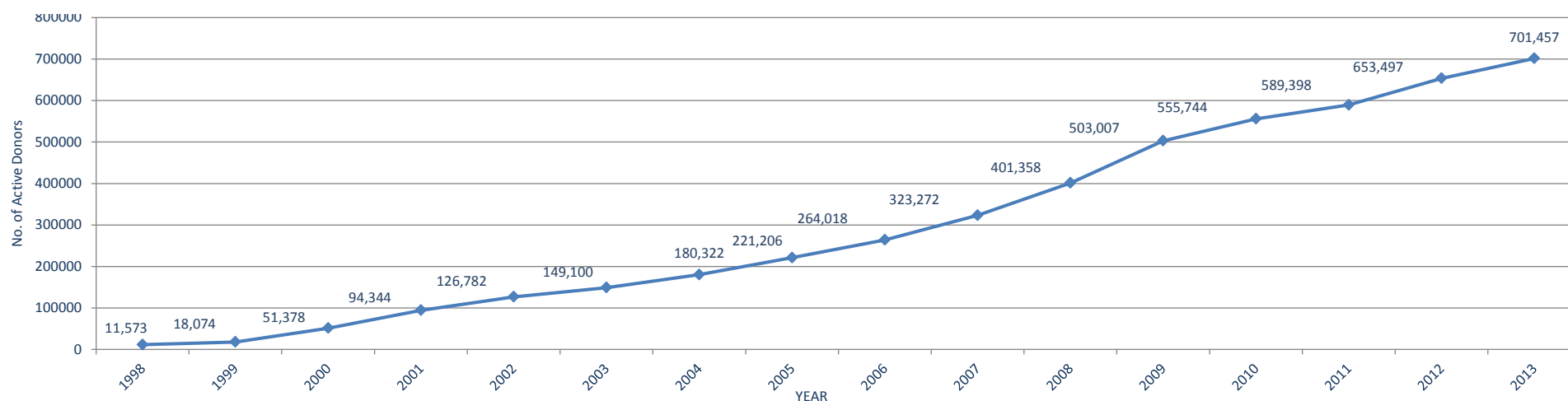


Fig. 2: Complete Matches (CT's) per year

1,261 complete matches (CT's) indicating a stem cell donor's full genetic compatibility with a patient, were made in 2013.
The Registry membership grew by 7.3% in 2013 while an impressive, increase of 16.9% in complete matches was noted over the same period.

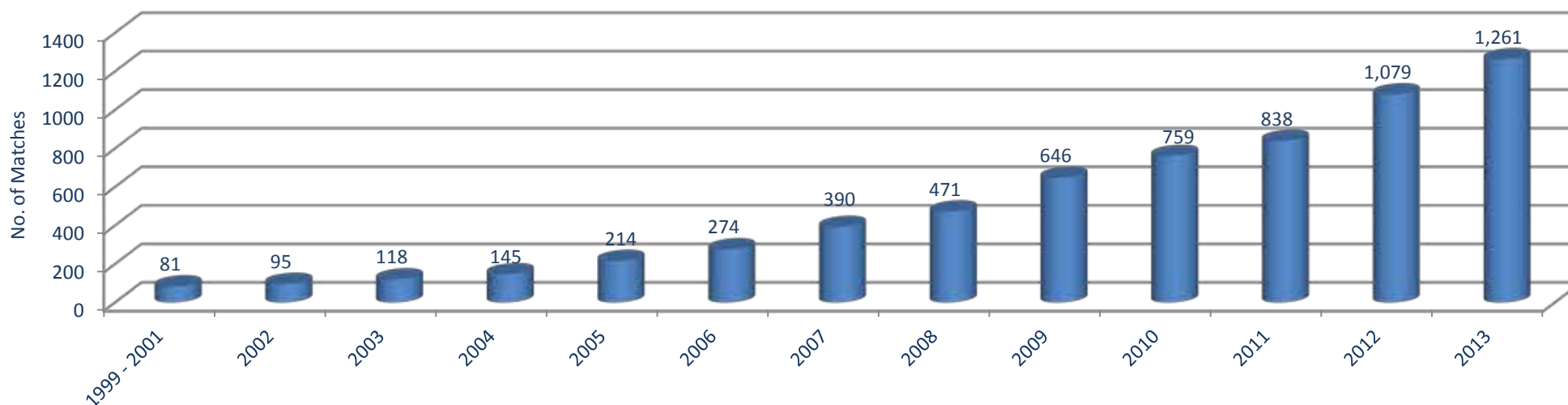


Fig. 3: Transplants Facilitated

In 2013 there was an increase of 22.3% in total transplants facilitated by our Registry. The 260 transplants from this year represent over one fifth of the total transplants facilitated since our establishment.

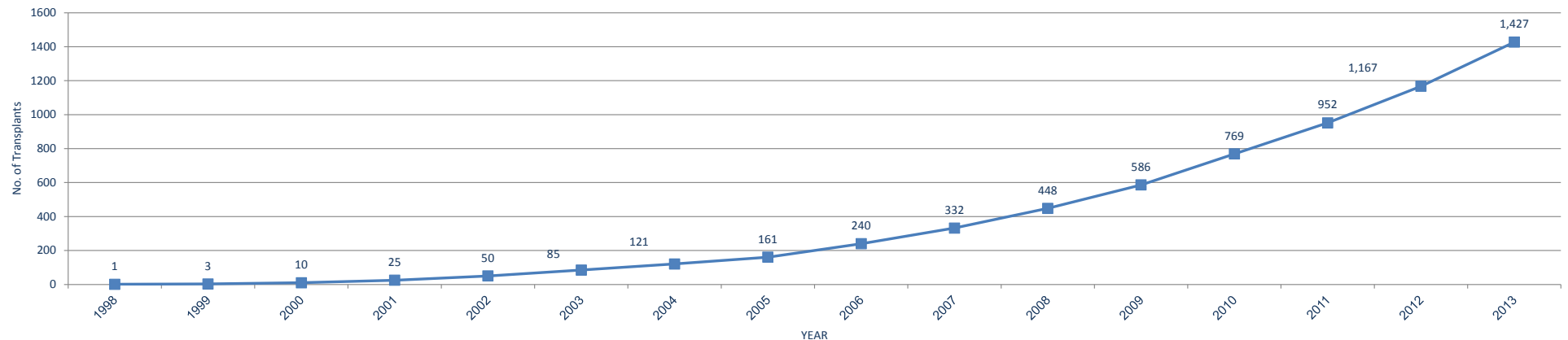
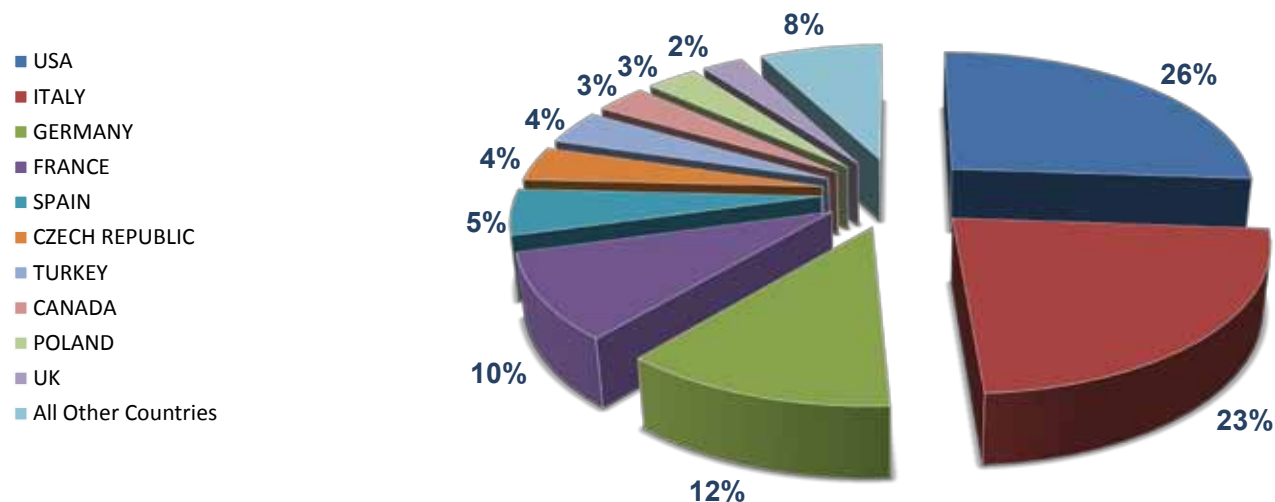


Fig. 4: Transplants by Country in 2013

The following chart shows transplants that were facilitated by Ezer Mizion's Registry per country in percent. The chart includes all countries where transplants were facilitated by our registry in 2013, except for Israel.



In the past year



51,995

new members
joined the registry



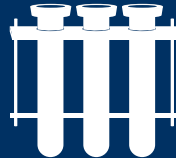
49,280

of them
IDF recruits



260

lifesaving
transplants



5.2

transplants
every week



1,261

complete
matches

- Shahar (right) and her twin sister at her first meeting with the IDF soldier who saved her life. "The nicest thing about getting better is having my hair back!"



Fig. 5: Transplants per 10,000 Stem Cell Donors

This table is extracted from Ezer Mizion Registry's report to WMDA (World Marrow Donors Association) for 2013. It tracks the increase in total transplants as well as the growth in number of transplants per ten thousand donors in the registry, which continued to rise along with and in spite of the registry's growth through the years reported.

Year	Stem Cell/Bone Marrow Donors in Registry	Total Transplants	International Transplants	Total Transplants per 10,000 donors	International Transplants per 10,000 Donors
2009	503,135	130	59	2.58	1.17
2010	555,691	162	88	2.92	1.58
2011	589,282	183	83	3.11	1.41
2012	653,398	215	123	3.29	1.88
2013	701,461	260	157	3.71	2.24

Fig. 6: Key Performance Indicators for 2013

Ezer Mizion continuously monitors registry performance in order to identify areas of both strength and opportunities for upgrade. Ezer Mizion uses Key Performance Indicators (KPI) defined by WMDA (World Marrow Donors Association) Quality Assurance Working Group. KPI assessment shows that the registry key activities and performance are carried out according to the highest performance standards established by WMDA.

KPI	Definitions	Proposed target value by WMDA	Ezer Mizion 2013
KPI #1	% of high resolution typing performed within 14 days	> 80%	87.0%
KPI #2	% of blood samples for confirmatory typing shipped within 14 days of requests	> 80%	80.0%
KPI #3	% donor availability at CT stage	> 80%	81.2%

INTERNATIONAL PRESENCE



Transplant Center Countries Partnering With Ezer Mizion

1	Argentina	10	China	20	Hong Kong	29	Netherlands	39	Slovenia
2	Armenia	11	Croatia	21	Hungary	30	New Zealand	40	South Africa
3	Australia	12	Cyprus	22	India	31	Norway	41	Spain
4	Austria	13	Czech Rep.	23	Ireland	32	Peru	42	Sweden
5	Belarus	14	Denmark	24	Israel	33	Poland	43	Switzerland
6	Belgium	15	Ecuador	25	Italy	34	Portugal	44	Turkey
7	Brazil	16	Finland	26	Korea	35	Romania	45	UK
8	Bulgaria	17	France	27	Lithuania	36	Russia	46	Uruguay
9	Canada	18	Germany	28	Mexico	37	Singapore	47	USA

Fig. 6: Comparing IDF and Civilian Matches per year

Then number of IDF recruits joining the Registry (49,280) increased by 19% in 2013. Their total presence in the registry grew from 33.8% in 2012 to 38.6% in 2013.

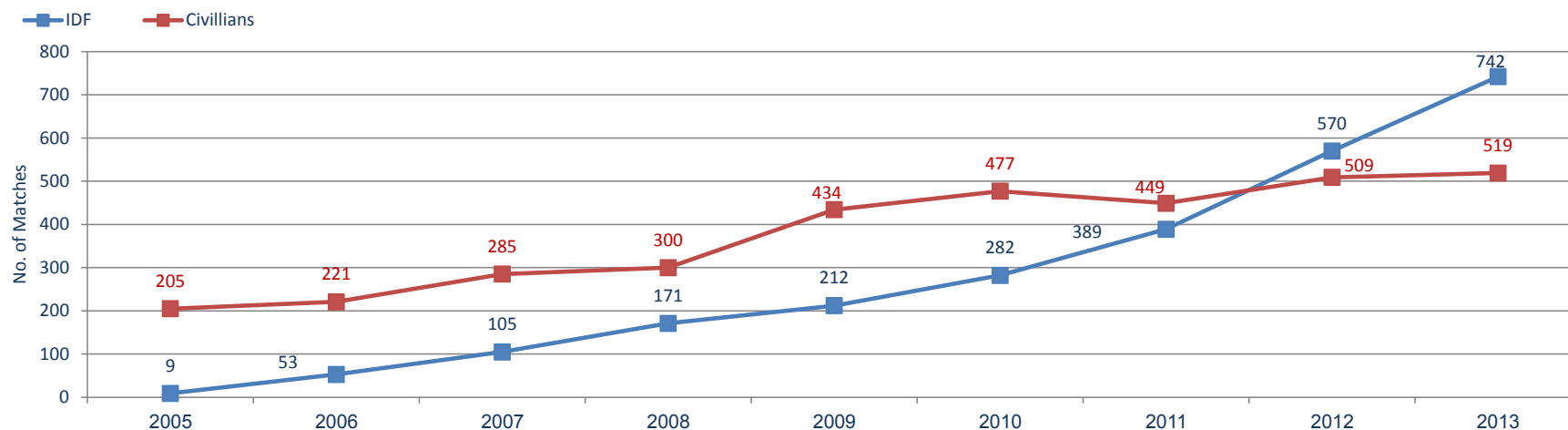
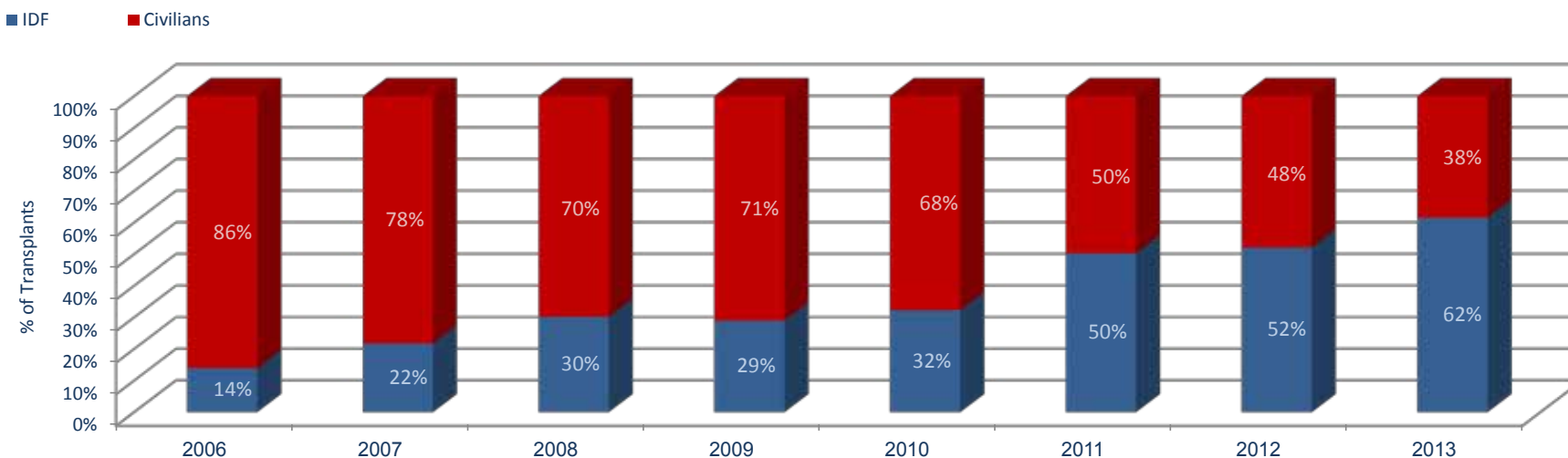


Fig. 7: % IDF Transplants v. % Civilian Transplants

The rate of transplants done from among IDF conscripts shows a steady annual increase. At the end of 2013, IDF recruits represented 38.7% of the total donors in the registry while they provided stem cells for 62% of the transplants. They are clearly a preferred donor population.



Ezer Mizion and the IDF: A Lifesaving Partnership

Since matching a stem cell donor with a patient is rooted in genetic compatibility, the likelihood of a matching donor is from the patient's race or ethnicity. In 2005 Ezer Mizion signed an agreement with the Israel Defense Forces where every conscript is given the opportunity to join Ezer Mizion's registry as part of the induction process, on the IDF base. This is a population of young, healthy potential donors who cover the entire ethnic spectrum.

This lifesaving partnership has indeed catapulted Ezer Mizion's registry forward in size and significance all over the world since transplant centers have a clear preference for younger donors and they cover many of the new ethnic combinations that have become more common with the rise in "mixed ethnicity" marriages.

► Soldiers joining the
bone marrow registry at
the IDF recruitment base



WINGS OF SENSITIVITY

It was a very moving encounter: There, on the line-up square of the Chatzerim Military Base stood Lieutenant N., a young officer who just got his Air Force wings. Up in the audience sat the man whose life was saved, thanks to a bone marrow donation he received from the young pilot.

Several years ago, when Lieutenant N. enlisted in the IDF, he joined Ezer Mizion's Bone Marrow Donor Registry as part of his induction. One of hundreds who signed up that week, he assumed nothing would ever come of it and promptly forgot about it. But he was wrong.

A while later, he was found to be a compatible donor for Shmuel Harari, a 63-year-old resident of Arad,

whose last chance to survive was a stem cell transplant. The transplant was successful

and now Harari longed to meet his donor.

The young Lieutenant was also anxious to meet the person whose life he had saved and so plans were made to meet at the "Wings Parade" ceremony held at the conclusion of the pilot training course. Emotions already high due to the event, they reached even further heights as the two embraced, sharing their joy with Lieutenant N's family and fellow pilots.

Harari's daughter, son-in-law and two grandchildren had accompanied the jubilant grandfather. "Because of you, I'll be able to watch these children grow up," he told his donor.



YOUR INVOLVEMENT

As the need and use for stem cell transplants has grown, so has our charge to do more.

Caring people from all over the world help us coordinate fundraising events to benefit our Bone Marrow Registry and cancer support activities. They play a critical role in spreading the word about the needs of cancer patients, and of the need for a robust registry and its importance in saving lives of patients everywhere. In 2013 philanthropists from the USA, UK, Brazil, Canada and Israel worked tirelessly to support our activities.

We acknowledge their efforts and thank them for helping raise and provide funds that enable patients to access the support and lifesaving transplants they need.

You can help too! Give now! One hundred percent of your donation will go directly to the cause of your

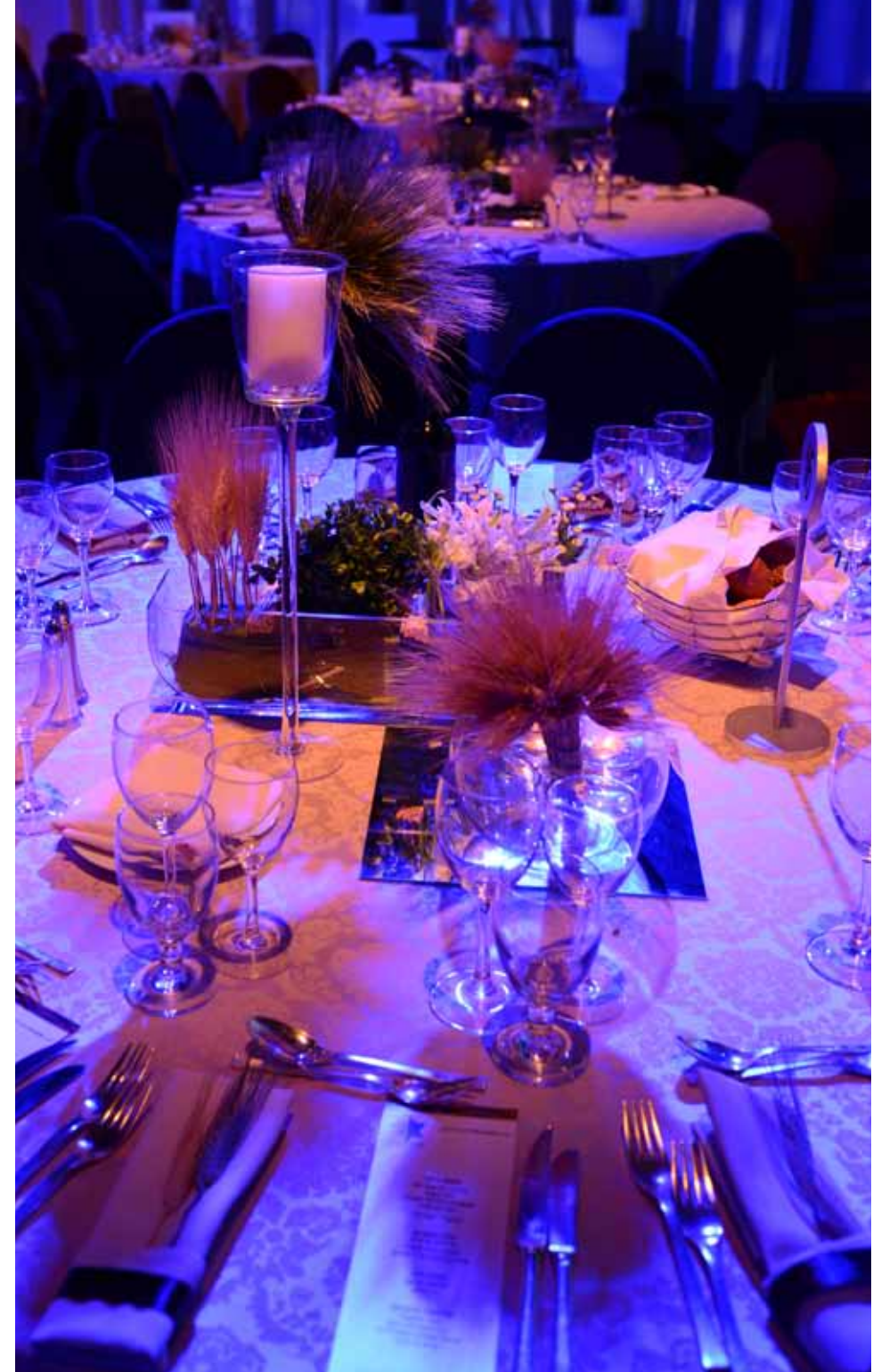
choice: cancer patient support activities, patient stipends, funding lab testing for new potential stem cell donors who join the registry, or opening a personalized donor pool.

Get involved in a fundraising event in your community. Sponsor and play at our Golf Event. Advocate with foundations and matching gift or corporate sponsors. Remember us in your will. Sign up for our email updates at www.ezermizion.org

Stay in touch and spread the word.



Ofra Konikoff, Chief Transplant Coordinator, addressing a gala fundraising event



PERSONALIZED DONOR POOLS (DP)

We acknowledge with deep appreciation the patrons of the following Donor Pools whose generosity has covered the cost of lab testing for new potential stem cell donors, funded deeper level lab testing and enabled the growth of our registry.

Your caring has significantly increased the chances of survival for cancer patients everywhere. The potential donors in your pool are there and ready for any patient who will need them in the future, and for whom time is of essence.

We look forward to sharing with you the wonderful news that more lives have been saved from your donor pool.

Bradley Abkin & Ian Carno Donor Pool

Moises & Sandra Achar Donor Pool

Adelson Family Foundation Donor Pool

Ahavat Chesed Foundation Donor Pool

Aloni Chetz Property & Investments Donor Pool

Andre & Naomi Altholtz Donor Pool

Anonymous CF Donor Pool

Anonymous NF Donor Pool

Anonymous YH Donor Pool

Ramin & Betty Arasheben Donor Pool
in memory of F. Barzideh & in honor of Mr. and Mrs. N. Arasheban

Daniel & Marlene Arbess Donor Pool

Abud & Mery Attie Donor Pool

Alberto Attie Donor Pool

Cynthia Attie Donor Pool

Iris Barel Donor Pool

Sam Baum & J. J. Kimche Donor Pool
in memory of Judi Back & Yisroel Kimche

Beaverbrooks Donor Pool

Belle Harbor Community Donor Pool

Ben Josef Family Donor Pool

A. Berkeley Family Donor Pool

Susan Black Donor Pool

Tuvia Theo Blum Donor Pool

Bluston Charitable Trust Donor Pool

Boeing Company Donor Pool

Stanley Bookatz Donor Pool

Bornblum Foundation Donor Pool

Netta Boxenbaum Donor Pool

René & Susanne Braginsky Donor Pool

Brazil Community Donor Pool

Michael Brecker Donor Pool

Edgar & Jan Bronfman Donor Pool

Rachel Bronfman Donor Pool

David & Celia Cababie & Sons Donor Pool

Rosa Cababie Donor Pool

Canada Israel Ltd. Donor Pool

Geoff & Gill Caplan Donor Pool

Abraham Cassab Donor Pool

Reverend & Mrs Henry Chait Donor Pool

Moises & Nelly Charua Donor Pool

Jacobo Cheja Donor Pool

Jose Cherem Dichi Donor Pool

Alicia Cherem Donor Pool

Clal Insurance Donor Pool

Alan Cohen Donor Pool



David & Judy Hager DP



Fund Family DP



Ronald O. Perelman DP

Jose Cojab Donor Pool
 Damaghi Family Donor Pool
 Davis Family Donor Pool
 Abraham & Vivian Dichi Donor Pool
 Antonio & Jenny Dichi Donor Pool
 Kitty Doerfler Donor Pool
 Elliott & Lynn Dolin Donor Pool
 Yehudah Elbaz Donor Pool
 Izzy & Caryl Englander Donor Pool
 Evan Erlick Donor Pool
 Abraham Esquenazi Donor Pool
 Anne & Isidore Falk Foundation Donor Pool
 Michael David Falk Foundation Donor Pool
 Family of Anne & Isidore Falk Donor Pool
 David & Sarah Farajun Donor Pool
 Elias & Monica Fasja Donor Pool
 Adolfo Fastlicht Donor Pool
 Jeffrey & Carol Fastlicht Donor Pool
 Olya Frenklah Donor Pool
 Chana Perl Freund Donor Pool
 Lawrence Friedland Donor Pool

Chava Friedman Donor Pool
 Lazar & Chamie Fruchter Donor Pool
 Fund Family Donor Pool
 Simon Galante & Family Donor Pool
 Lloyd Gerard Donor Pool
 Lloyd Gerard Rayne Foundation Donor Pool
 Moises & Michelle Gertner Donor Pool
 Ady Gil Donor Pool
 Kermit Gitenstein Donor Pool
 Shimon A. Glazer Donor Pool
 Philip & Susi Goldberg Donor Pool
 Jane Goldman Donor Pool
 Sheldon Goldman Donor Pool
 Golf Classic New York Donor Pool
 Meir & Henny Gurvitz Donor Pool
 David & Judy Hager Donor Pool
 Moises & Fanny Haiat Donor Pool
 Yair & Ilana Hamberger Donor Pool
 Salomon & Daniel Hamui Donor Pool
 Harbour Charitable Trust Donor Pool
 Robert & Gita Hartman Donor Pool

Maurice Hatter Foundation Donor Pool
 Aryeh & Ida Haylveil Donor Pool
 Gabriel Heffes Donor Pool
 Lily Helfon Donor Pool
 Ralph & Judy Herzka Donor Pool
 Hole In One Donor Pool
 Hollywood Community Donor Pool
 Murray & Laura Huberfeld Donor Pool
 Ofer Idan Donor Pool
 Iranian American Jewish Federation Donor Pool
 J. Isaacs Charitable Trust Donor Pool
 Jewish Bone Marrow Testing Fund Donor Pool
 Howard & Debby Jonas Donor Pool
 Elias & Sarah Kalach Donor Pool
 Gabriel Kalach Donor Pool
 Kalmar Family Fndn. Donor Pool
 Charles & Sonia Kastner Donor Pool
 Don Marcos & Sra. Adina Katz Donor Pool
 Harvey & Gloria Kaylie Donor Pool
 Marilyn Kinches Donor Pool
 Joe & Carmella Klein Donor Pool



Ady Gil DP



Brazil Community DP



David & Lara Slager DP

PERSONALIZED DONOR POOLS (DP)

Harold Chaim Klug Donor Pool

Knobil Family & Friends Donor Pool

Manuel Konstam Donor Pool

Walter & Ruth Kramer Donor Pool

Leora Kuhillow Donor Pool

Charles Kushner Foundation Donor Pool

Lawrence - Far Rockaway Community Donor Pool

Rubin & Mollie Lazarus Donor Pool

Leeds Jewry Donor Pool

UHC Leeds Donor Pool

Lev & Olga Leviev Donor Pool

Levy Family Donor Pool

Michael & Evelyn Levy Donor Pool

Lewis Family Donor Pool

Nissan & Judith Lewy Donor Pool

Stanley Loman Donor Pool

Howard & Thea Lorber Donor Pool

Andy & Bassy Lowinger Donor Pool

Lyons Family Donor Pool

M & C Trust Donor Pool

Shlomo & Meirav Mandelbaum Donor Pool

George & Audrey Manning Donor Pool

Mark & Feigi Marmurstein Donor Pool

Yaakov & Rita Marmurstein Donor Pool

Maslavi Family Donor Pool in memory of Jacob Maslavi

Oren & Shoshana Masory Donor Pool

Rebecca Matoff Donor Pool

Ari Maurer Donor Pool

Neal & Nicci Menashe Family Donor Pool

Carlos & Tere Metta & Sons Donor Pool

Jose & Maria Metta Donor Pool

Mexican Community Donor Pool

Adam & Gila Milstein Donor Pool

Henrietta Milstein & Elazar Kahanow Donor Pool

David Monderer Donor Pool

Jonathan Morris Donor Pool

Martin & Ilana Moshal Donor Pool

Irving & Cherna Moskowitz Donor Pool

Amir Nachum Donor Pool

David & Collette Nahmad Donor Pool

Ezri & Ilana Namvar Donor Pool

New Rochelle Community Donor Pool

Dr. Fariborz Nobandegani Donor Pool

Leo & Sue Noé Donor Pool

Congregation Ohel David & Shlomo Donor Pool

Orenstein Families Donor Pool

Pears Family Donor Pool

Jacobo & Vicky Penhos Donor Pool

Ronald O. Perelman Donor Pool

Moshe & Bilha Podhazer Donor Pool

Israel & Edith Pollak Donor Pool

Alexander Primak Donor Pool

Prince Family Donor Pool

Gabi Propp Donor Pool

Levi Yitzchok & Yehudit Rachmani Donor Pool

Erez & Osnat Ram Donor Pool

Ruth Redlauer Donor Pool

Ira & Ingeborg Rennert Donor Pool

Roden Family Donor Pool

George & Pamela Rohr Donor Pool



Anne & Isidore Falk DP



Ira & Ingeborg Rennert DP



Yaakov & Rita Marmurstein DP

in memory of Charlotte Rohr

Marcos & Jacqueline Romano Donor Pool

Andrew & Margaret Rosinger Donor Pool

Joshua & Michelle Rowe Donor Pool

Safdie - Friedmann Donor Pool

Edmond Safra Donor Pool

Edmond J. Safra Synagogue Donor Pool

Jacob & Shari Safra Donor Pool

Lily Safra Donor Pool

Moise & Chella Safra Donor Pool

Marcos & Debbie Salame Donor Pool

Alan & Nicole Samson Donor Pool

Zohar Sapir Donor Pool

Nicholas & Terry Sasson Donor Pool

Schapira Family Donor Pool

Y. David & Cheryl Scharf Donor Pool

Schimmel Family Donor Pool

Avi & Meira Schnur Donor Pool

Dan & Gloria Schusterman Donor Pool

Farzad & Sheila Shahery Donor Pool

Philip & Hedyeh Shaoul Donor Pool

Shooter Family Donor Pool

Mary M. Shore Donor Pool

Mark & Barbara Silber Donor Pool
in memory of Sara Silber

Yehudah Simantov Donor Pool

David & Lara Slager Donor Pool

Carlos Smeke Donor Pool

Steven E. & Bonnie B. Stern Donor Pool

Suburban Torah Synagogue, Livingston NJ DP

Ezriel & Mildred Taub Donor Pool

Raoul Tawil Donor Pool

Toronto Celebration of Life Donor Pool

Rami & Yael Unger Donor Pool

Patricia Weinstock Donor Pool

Weiss Family Donor Pool

Roni Wertheimer Donor Pool

West Hempstead Community Donor Pool

Wilson Family Donor Pool

Maurice & Vivienne Wohl Philanthropic Fndn DP

Wolfson Family Donor Pool

Avraham & Vivian Yagel Donor Pool

Mayer & Moises Zaga Donor Pool



Safdie - Friedmann DP



Beaverbrooks DP



Ofer Idan DP



Lev & Olga Leviev DP



Sheldon Goldman DP



Damaghi Family DP



Boeing Company DP

DONOR POOL TRANSPLANTS 2013

DONOR POOL NAME	TRANSPLANTS IN 2013	TOTAL TRANSPLANTS
Aloni Chetz Property & Investments Donor Pool	3	5
Beaverbrooks Donor Pool	1	4
Tuvia Theo Blum Donor Pool	1	1
Bluston Charitable Trust Donor Pool	1	11
Boeing Company Donor Pool	2	2
Brazil Community Donor Pool	7	78
Alan Cohen Donor Pool	8	45
Damaghi Family Donor Pool	4	5
Evan Erlick Donor Pool	1	1
Michael David Falk Foundation Donor Pool	1	2
Family of Anne & Isidore Falk Donor Pool	2	2
David & Sarah Farajun Donor Pool	8	16
Fund Family Donor Pool	1	3
Lloyd Gerard Rayne Foundation Donor Pool	2	3
Ady Gil Donor Pool	1	4
Sheldon Goldman Donor Pool	1	3
Meir & Henny Gurvitz Donor Pool	1	1
David & Judy Hager Donor Pool	6	14
Hollywood Community Donor Pool	1	1
Ofer Idan Donor Pool	1	5
Iranian American Jewish Federation Donor Pool	2	3
J. Isaacs Charitable Trust Donor Pool	1	2
Jewish Bone Marrow Testing Fund Donor Pool	8	36
Don Marcos & Sra. Adina Katz Donor Pool	5	39
Joe & Carmella Klein Donor Pool	1	6



Toronto Celebration of Life DP



David & Sarah Farajun DP



Alan Cohen DP

Mexican Community DP



Andy & Bassy Lowinger DP



Aloni Chetz Property & Investments DP

DONOR POOL NAME	TRANSPLANTS IN 2013	TOTAL TRANSPLANTS
Leora Kuhillow Donor Pool	1	5
Lev & Olga Leviev Donor Pool	2	4
Lewis Family Donor Pool	2	4
Nissan & Judith Lewy Donor Pool	1	1
Andy & Bassy Lowinger Donor Pool	2	2
Mark & Feigi Marmurstein Donor Pool	2	4
Yaakov & Rita Marmurstein Donor Pool	1	3
Rebecca Matoff Donor Pool	2	2
Mexican Community Donor Pool	1	12
Martin & Ilana Moshal Donor Pool	1	6
Pears Family Donor Pool	1	1
Ronald O. Perelman Donor Pool	8	10
Israel & Edith Pollak Donor Pool	5	10
Gabi Propp Donor Pool	1	3
Ira & Ingeborg Rennert Donor Pool	24	61
Roden Family Donor Pool	1	2
George & Pamela Rohr Donor Pool	7	33
Safdie - Friedmann Donor Pool	2	8
Moise & Chella Safra Donor Pool	5	5
Zohar Sapir Donor Pool	2	5
Schapira Family Donor Pool	1	6
Avi & Meira Schnur Donor Pool	1	1
Dan & Gloria Schusterman Donor Pool	1	8
David & Lara Slager Donor Pool	1	1
Suburban Torah Synagogue, Livingston NJ DP	1	1
Toronto Celebration of Life Donor Pool	1	6
Patricia Weinstock Donor Pool	1	3
Maurice & Vivienne Wohl Philanthropic Fndn. DP	5	5
Wolfson Family Donor Pool	1	5



Iranian American Jewish Federation DP



Zohar Sapir DP



Don Marcos & Sra.
Adina Katz DP

David & Judy Hager DP



George & Pamela Rohr DP



Patricia Weinstock DP



SETTING UP A DONOR POOL

When a person joins Ezer Mizion's registry his cheek swab or blood sample is lab tested for genetic tissue typing. Tissue typing is costly: \$65 for every person who joins the registry. Search requests received at the registry are checked against all potential stem cell donors listed for compatibility. Donor and patients are matched and lifesaving transplants are facilitated.

Stem cell testing sponsors can set up a Donor Pool in Ezer Mizion's main registry, bearing the name of their choice. Each Donor Pool includes all the potential stem cell donors whose initial tissue typing was funded by the sponsor.

Upon its initial testing, every blood sample is given a tracking code and the sponsored codes are entered into the Donor Pool where

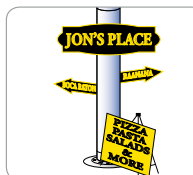
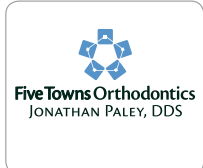
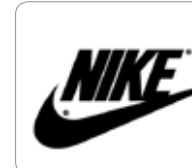
they are constantly monitored. Sponsors of Donor Pools are notified when a lifesaving stem cell transplant is carried out from their pool, sharing the exciting news that they have been instrumental in saving a patient's life.

Supporting Ezer Mizion's registry is an "insurance policy" for everyone. A completely compatible donor is not something that can be bought with money. Illness does not differentiate between rich or poor, young or old. The registry is vital for you, for me, for our loved ones and for the entire Jewish people.

For more information on setting up a donor pool in honor or in memory of someone dear to you, contact us at info@ezermizion.org

◀ Idan enjoying some summer fun with his family at Ezer Mizion's summer camp for cancer patients and their family, where he continued his treatments under full medical supervision.

APPRECIATING OUR SPONSORS





◀ Oranit - Ezer Mizion's cancer patient guest home and cancer support services center

Home-away-from-home Cancer Support

Cancer therapy treatments take place in hospitals on an outpatient basis, whenever possible. In Israel, several major children's oncology units are located around the Tel Aviv area. Young cancer patients who live in other parts of the country have to travel hours every day for their outpatient treatments.

Children who have to endure the ravages of chemotherapy and radiation are exhausted. They are further debilitated by the hours they spend every day on the road to and from the difficult treatments.

This all changed in 1996, when Ezer Mizion - with the generous assistance of the Bracha & Motti Zisser Foundation, Andrew & Margaret Rosinger, and Israel's National Insurance

Institute - opened Oranit, a home away from home for young cancer patients and their families.

Located in Petach Tikvah, near Israel's major pediatric oncology centers, Oranit spares families from exhausting daily trips for brief treatment sessions. These families are referred to Ezer Mizion by doctors, nurses or social workers at hospitals where they are undergoing cancer therapy.

Oranit provides an escape from the world of chemotherapy and aggressive treatments into a haven of comfort, caring and cheer.

In addition to the 18 spacious and comfortable suites of the Andrew and Margaret Rosinger

Residential Wing, Oranit has a dining hall, an auditorium, a synagogue, the beautifully landscaped Malka Lazarus playground, the Rinat Bakshi Wildlife Pavilion and an extensive program of recreational and emotional therapy activities at the Donald Berman Rehabilitation Center.

In contrast to hospitals and treatment, Oranit is a beautiful, happy place where families can relax and spend quality time together in spite of the health crisis they are undergoing. Ezer Mizion cancer support services are provided free of charge to the cancer patient and all immediate family members (for pediatric cancer patients: parents and siblings; for adult cancer patients: spouses and children).

"Please take this sarcoma away" was the wish that Gaya wrote on her helium balloon that she sent flying up to heaven, hopeful that her prayer will be answered.

Cancer Patient Services Profile of Population Served in 2013



420

Children with cancer



1,522

Children of sick parents



558

Parents with cancer



1,950

Total adults assisted



978

Total number of families



2,965

Total children assisted



1,023

Cancer patient siblings

SPECIAL CANCER PATIENT SUPPORT ACTIVITIES



Building spirits at LEGO Workshop



Fun day for sick mothers



Support in hospitals



Healing fun and friends



Summer camp for cancer patients and their families



Pampering day for cancer moms



Birthday parties pave the way to recovery



Outings, trips and field days



Dedicated volunteers



Cooking workshop by top chefs



Animal therapy at its best



Celebrating life



FINANCIAL REPORT

Thousands of people with cancer from all over the world turned to Ezer Mizion for assistance in 2013.

Your financial backing is what enables us to bring them the top medical care, and the financial and emotional support they need.

Your support is critical to our mission of growing our registry and empowering cancer patients and their families.

Join them - and Ezer Mizion - in choosing life!

2013 Top Ratings

In recognition of our commitment to transparency and accountability, Ezer Mizion has received excellent ratings by non-profit watchdog organizations that assist funders to make informed giving choices.



- ◀ Hadas Laufer with her father 14 years after her stem cell transplant. "Ezer Mizion's registry turned us from very sick and sad into a happy, healthy, complete family."

STATEMENT OF ACTIVITIES

as of December 31, 2013 (not audited)

Bone Marrow Registry and Cancer Support Services

Revenues and Gains	
Search and procurement fees	\$8,926,178
Government ministry allocations	\$633,535
Public sector, service fees etc.	\$343,200
Donations	\$3,431,977
TOTAL INCOME	\$13,334,891

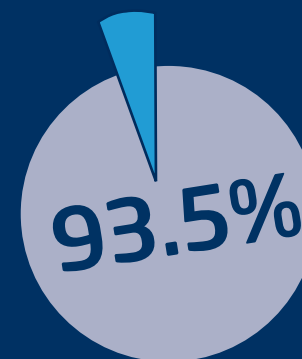
Expenses	
Registry program services	\$8,050,259
Cancer support program services	\$4,454,860
Fundraising and management	\$812,833
TOTAL EXPENSES	\$13,317,951
SURPLUS	\$16,939

Registry and cancer support services

HOW WE SPEND EACH DOLLAR

93.5% for program services

6.5% for administration



REGISTRY STAFF DIRECTORY

Directors

Rabbi Dr. Chananya Chollak
Ezer Mizion International Chairman
Tel: +972-3-614-4560
chananya@ami.org.il

Dr. Bracha Zisser, PhD
Director
Tel: +972-3-927-7777
bracha_zisser@oranitami.org.il

Prof. Isaac Yaniv, MD
Medical Director
Tel: +972-3-925-3669
Iyaniv@clalit.org.il

Mrs. Ofra Konikoff
Chief Transplant Coordinator & PR
Tel: +972-3-927-7772
ofrak@bmdr.org.il

Supervisor

Mrs. Nira Shriki
Search & Transplant Supervisor
Tel: +972-3-927-7778
niras@bmdr.org.il

Accounting Unit

Mrs. Lea Fenigstein
Tel: +972-3-927-7779
leaf@bmdr.org.il

Research & Quality Management

Mrs. Sigal Manor
Tel: +972-3-927-7785
sigal@bmdr.org.il

Search Unit

Mrs. Naomi Silbercweig
Search Coordinator
Tel: +972-3-927-7772
naomiz@bmdr.org.il

Mrs. Yona Gat
Search Coordinator
Tel: +972-3-927-7772
yonag@bmdr.org.il

Pre Harvest Unit

Mrs. Estee Rubinstein
Donor Coordinator
Tel: +972-3-927-7772
esteer@bmdr.org.il

Mrs. Michal Bendet
Donor Coordinator
Tel: +972-3-927-7772
micahlb@bmdr.org.il

Ms. Yael Fuchs
Donor Coordinator
Tel: +972-3-927-7772
info@bmdr.org.il

Harvest Unit

Mrs. Dvory Fliegman
Search Coordinator
Tel: +972-3-927-7775
dvoryf@bmdr.org.il

Mrs. Yehudit Eitiel
Donor Coordinator
Tel: +972-3-927-7774
yehudite@bmdr.org.il

Mrs. Yamit Gidon Salomon
Donor Coordinator
Tel: +972-3-927-7776
yamitg@bmdr.org.il

Data & Administration

Mrs. Tehila Freund
Tel: +972-3-927-7776
tehila@bmdr.org.il

Donor Recruitment

Mrs. Dorit Hazan
Tel: +972-3-927-7772
dorit@bmdr.org.il

Consultants

Dr. Jerri Stein, MD
Medical Advisor
Tel: +972-3-925-3762
jstein@clalit.org.il

Dr. Ronit Yerushalmi, MD
Medical Advisor
Tel: +972-3-9530-4674
Ronit.Yerushalmi@sheba.health.gov.il

Dr. Tsila Zuckerman MD
Medical Advisor
Tel: +972-4-8542541
t_zuckerman@rambam.health.gov.il

Dr. Tirza Klein
HLA and Immunogenetics Consultant
Tel: +972-3-937-6747
tklein@clalit.org.il

LOCAL CANCER SUPPORT SERVICE OFFICES

Ezer Mizion - Main Office

5 Rabinov Street
Bnei Brak 51563 Israel
Tel: +972-3-614-4572
Fax: +972-3-614-4571
info@ezermizion.org
Reg. Amuta 580079978

Oranit Cancer Patient Guest Home

40 Kaplan Street
Petach Tikvah 49210 Israel
Tel: +972-3-927-7777
contact@ezermizion.org
Reg. Amuta 580079978

Bone Marrow Donor Registry

40 Kaplan Street
Petach Tikvah 49210 Israel
Tel: +972-3-927-7778
Fax: +972-3-921-9654
ezermizion@bmdr.org.il
Reg. Amuta 580079978

INTERNATIONAL OFFICES

USA

1281 49th Street
Brooklyn, NY 11219
Tel: 718-853-8400
Fax: 718-437-4683
office@ezermizionusa.org
Tax ID Number 13-3660421

CANADA

4850 Keele Street, 1st floor
Toronto, Ontario M3J 3K1
Tel/Fax: 647 799 1475
Toll Free: 1 877 544 3866
canada@ezermizion.org
Reg. Charity 85064 7637 RR0001

UK

923 Finchley Road
London NW11 7PE
Tel: 020-8458-9999
Fax: 020-7788-2951
office@ezermizion.org.uk
UK Reg. Charity 1073496



www.ezermizion.org